

<b>SUBMITTAL DATA SHEET</b>	<b>CH-36LCDTUI</b>	<b>CH-HYP36LCUO</b>
-----------------------------	--------------------	---------------------

Job Name: .....  
 Location: .....  
 Engineer: .....  
 Submitted to: .....  
 Submitted by: .....  
 Reference: .....

Date: .....  
 Approval: .....  
 Construction: .....  
 Unit #: .....  
 Drawing #: .....



### PERFORMANCE AND EFFICIENCY

Cooling		Heating	
32,000 Btu/h		38,000 Btu/h	
SEER	17	HSPF4/HSPF5	11/9
EER	12.5	COP	3.52

### OPERATION TEMPERATURE RANGE

Indoor		Outdoor	
cooling	heating	cooling	heating
62~90°F	32~86°F	-22~122°F	-22~86°F

### ELECTRICAL

Power supply	208-230V/ 60Hz, 1Ph
MCA	39
MFA	50
Outdoor fan motor	
Input	126 W
Output	85 W
Compressor	
Capacity	44,015 Btu/h
Input	3,565 W

**MCA:** Minimum Circuit Ampacity    **MFA:** Max. fuse A    **RLA:** Rated load A

### PIPING

Refrigerant piping Liquid/Gas side	3/8 - 5/8 in
Max. refrigerant pipe length	213 ft
Max. difference in level	98 ft

This warranty should be registered on our web-site [www.cooperandhunter.us](http://www.cooperandhunter.us) within 60 days of installation. The warranty is only valid when installed by a Licensed HVAC Technician. A warranty period of Seven (7) years on compressor to the original registered end-user. A warranty period of Five (5) years on all parts to the original registered end user. Warranty applies only to products remaining in their original installation location.



### INDOOR SPECIFICATION

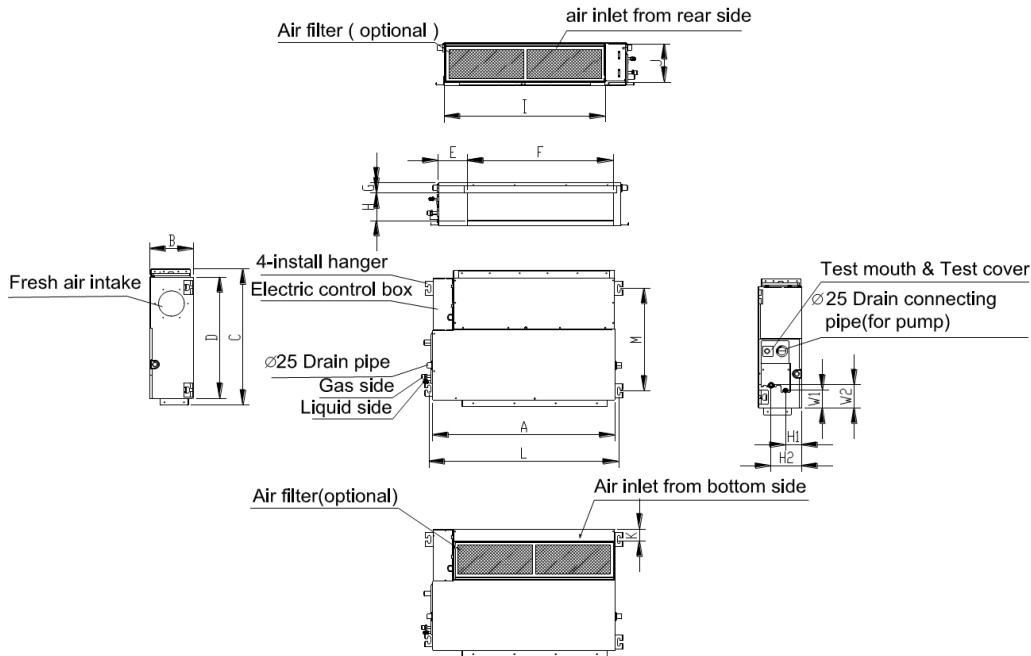
Air Flow (Hi/Mi/Lo)	1229/1032/715 CFM
Noise Level (Hi/Mi/Lo)	50.5/47/43 dB(A)
Unit Dimension (WxDxH)	47.24x34.41x11.81 in
Net/Gross Weight	120/142 lb

### OUTDOOR SPECIFICATION

Air flow	4,470 CFM
Noise Level	65 dB(A)
Dimension (WxDxH)	37.48x16.34x52.48 in
Net/Gross weight	222.27/248 lb
Refrigerant type/Quantity	R410A/148 oz
Refrigerant precharge	25 ft
Additional charge for each ft	0.32 oz

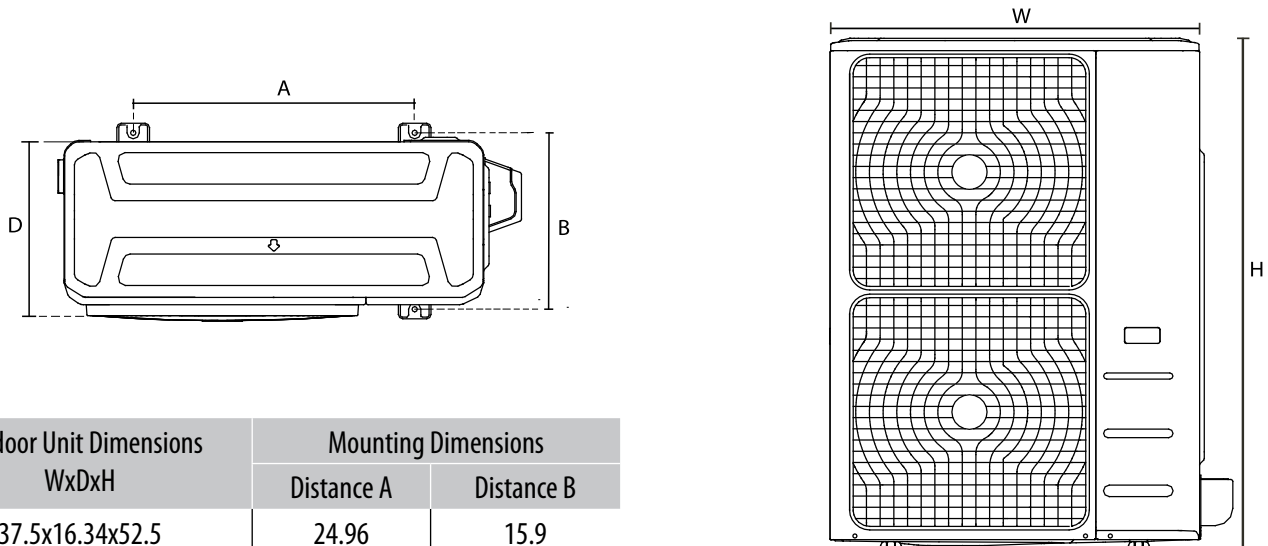
SUBMITTAL DATA SHEET	CH-36LCDTUI	CH-HYP36LCUO
----------------------	-------------	--------------

### INDOOR UNIT



Outline dimension				Air outlet opening size				Air return opening size			Size of mounted plug		Size of gas and liquid valve			
A	B	C	D	E	F	G	H	I	J	K	L	M	H1	H2	W1	W2
47,25	11,81	34,41	31,5	4,84	41,1	1,97	8,94	43,35	11,02	0,2	48,82	27,44	3,15	5,91	7,28	8,27

### OUTDOOR UNIT



Outdoor Unit Dimensions WxDxH	Mounting Dimensions	
	Distance A	Distance B
37.5x16.34x52.5	24.96	15.9