

Job Name:	Date:
System Reference:	

Procon MelcoBEMS MINI (A1M)



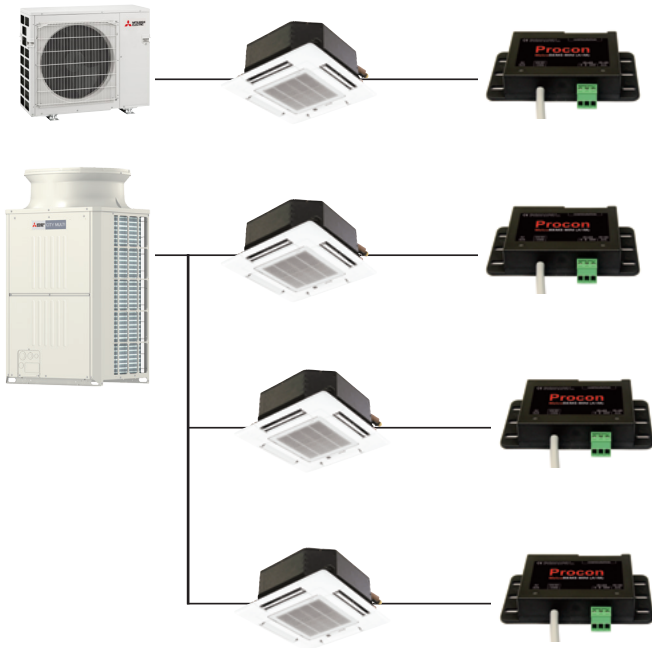
SPECIFICATIONS

- Allows for a third party building management system to control a Mitsubishi Electric Cooling & Heating CITY MULTI®, M-Series, or P-Series indoor unit.
- One MelcoBEMS MINI (A1M) per indoor unit
- Indoor Unit Connection: CN105 – IT Terminal
- 12VDC power from indoor unit CN105 Connector
- Compatible with MAC-333IF connector CN505 IT
*requires additional 12VDC power supply
- Communication protocols supported:
 - BACnet® MSTP (RS-485) with addressing 1-127
 - MODBUS RTU (RS-485) with addressing 1-247
- LED light notification status of valid communication between:
 - Procon and Indoor unit
 - Procon and BACnet®/MODBUS networks
- Approximate cable length is 37 in. (940 mm)
- Dimensions: 3.74 x 2 x 0.75 in. (95 x 51 x 19 mm)

MODBUS POINTS TABLE

Object Type	Object Name
Commandable Points	ON/OFF
	Mode
	Setpoint
	Fan Speed
	Air Direction
Monitor Only Points	Fault Codes
	Room Temperature

SYSTEM DIAGRAM



BACnet® POINTS TABLE

Object Type	Object Name
Commandable Points	Drive OFF/ON Setup
	Setpoint
	Mode Setup
	Fan Speed Setup
	Air Direction Setup
	Temperature Units
Monitor Only Points	Drive OFF/ON State
	Mode State
	Fan Speed State
	Air Direction State
	Inlet Temperature
	Fault Code

MODBUS POINTS TABLE

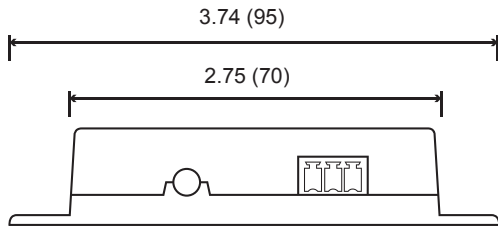
Configurable Settings	
Register Name	Modicon Address
Modbus Slave ID	40005
BACnet® Station ID	
Modbus RS-485 Baud Rate	40006
BACnet® RS-485 Baud Rate	
RS-485 Parity Type	40007
Drive On/Off	40008
Room Temperature [READ ONLY]	40009
Fault Code (hex) [READ ONLY]	40010
Firmware Version [READ ONLY]	40011
Modbus Comms Counter [READ ONLY]	40012
Fault Code (decimal) [READ ONLY]	40013
System Type Detected [READ ONLY]	40014
Deadband Enabled State [READ ONLY]	40015
BMS Room Temperature (signed)	40016
BMS Room Temperature	40017
BMS Virtual Setpoint	40018
Deadband Heating Setpoint	40019
Deadband Cooling Setpoint	40020
BACnet® Device Instance (most significant 16 bits)	40273
BACnet® Device Instance (least significant 16 bits)	40274
BACnet® Max Master	40275
BACnet® Max Info Frames	40276
BACnet® APDU Timeout	40277
BACnet® APDU Retries	40278

Model: PAC-UKPRC001-CN-1, cont.

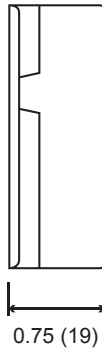
DIMENSIONS

Units: in. (mm)

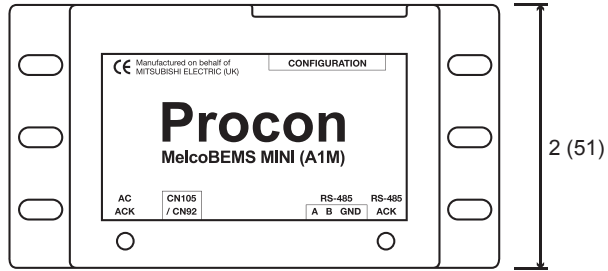
Front View



Side View

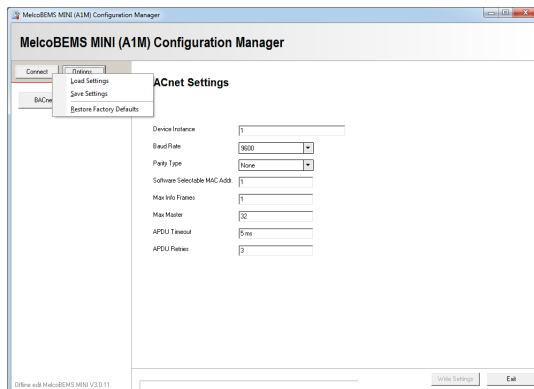


Top View



CONFIGURATION TOOL: MELCOBEMS MINI V1.0.1.0b.exe

- Software downloadable from MyLinkDrive.com
- Software tool to setup BACnet® setting through Modbus Points Table
- Requires field supplied part: USB to RS-485 adapter



USB to RS-485

Manufactured for MITSUBISHI ELECTRIC US, INC.
1340 Satellite Boulevard, Suwanee, GA 30024
Toll Free: 800-433-4822 www.mehvac.com